


# DATA MATTERS

## Are you a target for an E/M audit?

Angie Babb, CPC  
Senior Manager | Blue & Co., LLC



### WHO IS LOOKING ... WHO'S NOT LOOKING?



#### Entities that Conduct Chart Audits

- Commercial payers
- Department of Justice (DOJ)
- Office of Inspector General (OIG)
- Zone Program Integrity Contractors (ZPIC)
- Medicare Administrative Contractors (MAC)
- Comprehensive Error Rate Testing Contractor (CERT)
- Medicare and Medicaid Recovery Audit Contractors (RAC)
- Medicaid Integrity Contractors (MIC)
- Medicaid Payment Contractors (MPC)

2

## WHY SHOULD YOU KNOW WHAT THEY KNOW?

### Fact #1

- The majority of the work of some providers is E&M visits.
- The stakes are high for these providers and it is extremely important (**A MUST**) to get the appropriate reimbursement every time.

### Fact #2

- If the stakes are high for your health care organization/ providers – how do you think the payers see E&M services?
- These services are a huge portion of insurance reimbursement.

### Fact #3

- Being in the know will help to reduce your risk of an audit as well as help you defend your practice should an audit occur.

3

## FACTORS CONTRIBUTING TO RISK OF AUDIT

- With the implementation of the EHR, physicians are now able to easily document more information for each visit.
- Electronic note configuration settings cause information to be pulled into a note that is not relevant.
- A shift in documentation patterns frequently correlates with a shift in billing practices.



4

## BENCHMARKING- BEST PLACE TO START

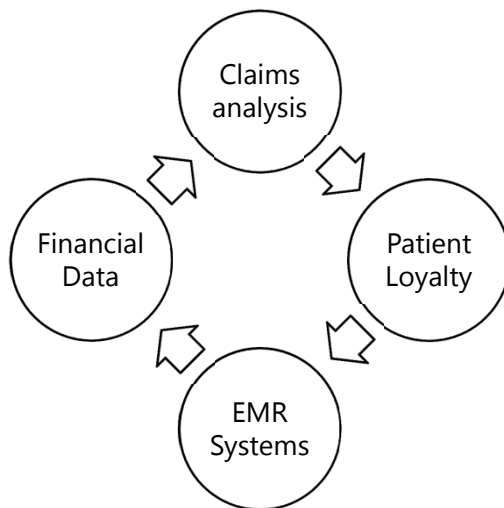


- Evaluating or checking (something) by comparison with a standard or comparing one's performance metrics to industry bests.
- **IF** your physician's E/M coding profiles were compared to their peers would they be considered an "outlier"?

• **Would they stand out numerically from their peers?**

5

## BIG DATA EXAMPLES IN HEALTHCARE



Healthcare has been slow to move in analyzing data!

6

## BIG DATA TELLS THE STORY

### What can be determined by your data?

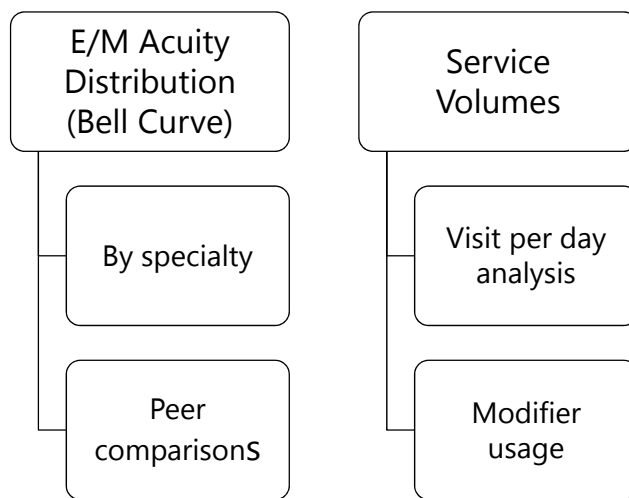
This data can be interpreted with analytics

Provides feedback on trends/patterns

Outside agencies can gain insight and reach conclusions based on your data

7

## TWO GREAT METRICS TO BENCHMARK

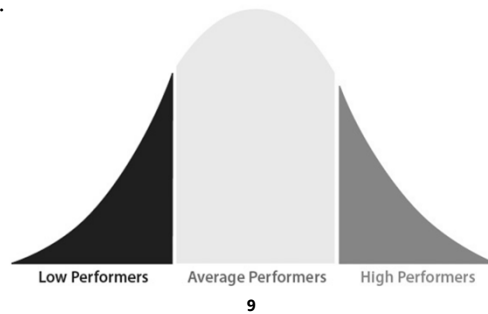


8

## WHY TRACK YOUR E/M DISTRIBUTION?

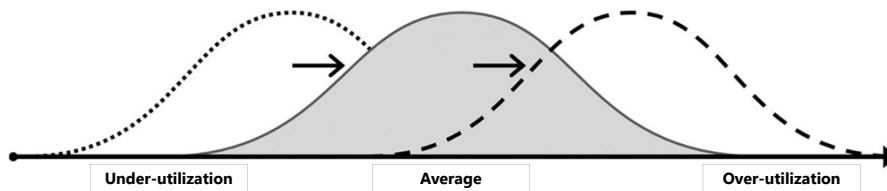
### Bell Curves

- Expected use of the E/M code range should be a bell-shaped curve.
  - Indicating the highest occurrence of level assignment should be moderate levels with a taper down effect on occurrence for the highest and lowest level assignments.
  - Some organizations request from CMS a “provider specific bell curve.” This bell curve will compare a provider to their peers in their area.



## WHAT CAN YOU LEARN FROM BELL CURVE DATA?

- If the curve is “right shifted,” to the higher end of scale
  - Could signal potential over-utilization of the higher codes



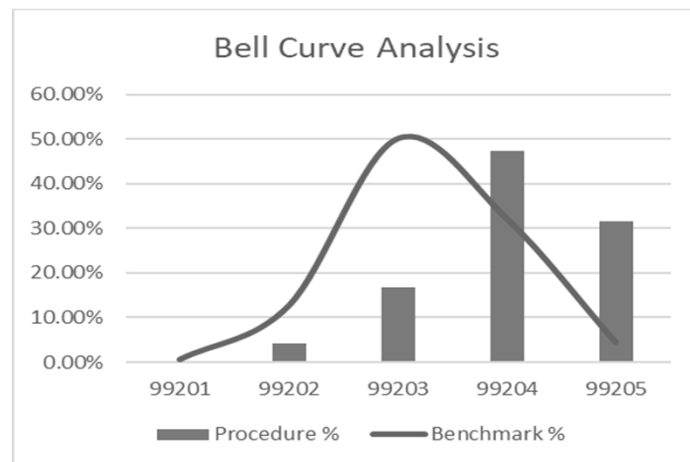
- If the curve is “left shifted,” to the lower end of the scale
  - Could signal potential under-utilization of the higher codes

## WHAT IF...

FAMILY PRACTICE	PROCEDURE	ACTUAL UTILIZATION	%	BENCHMARK %	POINT SHIFT
	99201	0	0%	0.61%	-0.6
	99202	50	4.22%	12.67%	-8.7
	99203	200	16.88%	50.10%	-33.1
	99204	560	47.26%	32.18%	14.8
	99205	375	31.65%	4.43%	27.6
<b>TOTAL</b>		<b>1185</b>			

11

## FAMILY PRACTICE



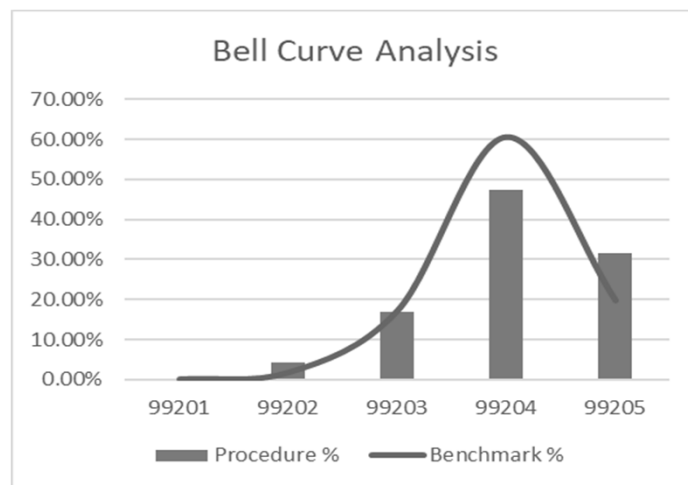
12

## BUT WHAT IF...

CARDIO	PROCEDURE	ACTUAL UTILIZATION	%	BENCHMARK %	POINT SHIFT
	99201	0	0%	0.17%	-0.17
	99202	50	4.22%	1.85%	2.15
	99203	200	16.88%	17.36%	-0.36
	99204	560	47.26%	60.77%	-13.77
	99205	375	31.65%	19.86%	12.14
<b>TOTAL</b>		<b>1185</b>			

13

## CARDIOLOGY



14

### WHAT COULD OUR DATA SAY ABOUT THIS PROVIDER?

FP	CPT	ACTUAL UTILIZATION	%	BENCHMARK %	FEE	BILLED \$	POTENTIAL \$
	99201	0	0%	0.61%	\$42.11	\$0	\$304.39
	99202	50	4.22%	12.67%	\$71.29	\$3,564.50	\$10,703.44
	99203	200	16.88%	50.10%	\$102.13	\$20,426.00	\$60,633.05
	99204	560	47.26%	32.18%	\$156.65	\$87,724.00	\$59,735.81
	99205	375	31.65%	4.43%	\$197.15	\$73,931.25	\$10,349.49
<b>TOTAL</b>		<b>1185</b>				<b>\$185,645.75</b>	<b>\$141,726.18</b>

15

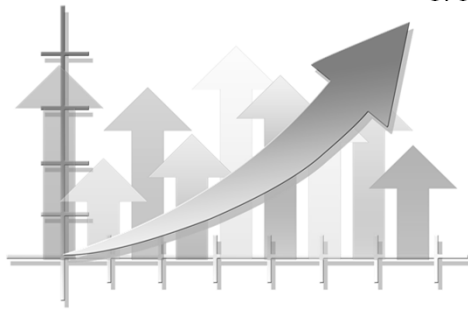
### WHAT COULD OUR DATA SAY ABOUT THIS PROVIDER?

CARDIO	CPT	ACTUAL UTILIZATION	%	BENCHMARK %	FEE	BILLED \$	POTENTIAL \$
	99201	0	0%	0.17%	\$42.11	\$0	\$84.83
	99202	50	4%	1.85%	\$71.29	\$3,564.50	\$1,562.86
	99203	200	17%	17.36%	\$102.13	\$20,426.00	\$21,009.78
	99204	560	47%	60.77%	\$156.65	\$87,724.00	\$112,807.50
	99205	375	32%	19.86%	\$197.15	\$73,931.25	\$46,397.48
<b>TOTAL</b>		<b>1185</b>				<b>\$185,645.75</b>	<b>\$181,862.45</b>

16



## SERVICE VOLUME ANALYSIS



- The distribution of the types of services being billed is important, but equally important is the overall volume of services.
- Compare the total annual revenue to standards for the specialty. (e.g., MGMA data by specialty).
  - Where do you fall 25<sup>th</sup>, 50<sup>th</sup>, 75<sup>th</sup> or 90<sup>th</sup> percentile?
- Providers with revenue in the higher percentiles are more prone to be audited.

17

## VISIT PER DAY EXAMPLE

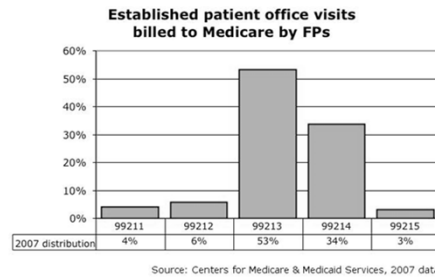
Provider Information		MGMA Percentiles		
Criteria	Actual	70th	80th	90th
Total Days Worked	265	255	255	260
Total Encounters	6,954	5,508	6,009	6,342
Avg. Encounters/Day	32	19	21	25
Total Work RVUs	9,763	5,672	6,279	7,390

18

## HOW DO YOU MINIMIZE YOUR EXPOSURE?

### E/M Coding Benchmarks

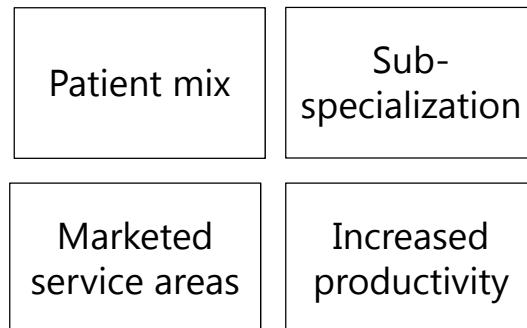
- Providers need to be aware of and understand their utilization of all codes prone to an audit.
  - New patient office visits
  - Established patient office visits
  - Inpatient admissions
  - Subsequent hospital visits
- Comparison of his/her utilization of E/M codes against others in his/her specialty through bell curve analysis.



19

## ANALYZE THE DATA AND CONSIDER THIS

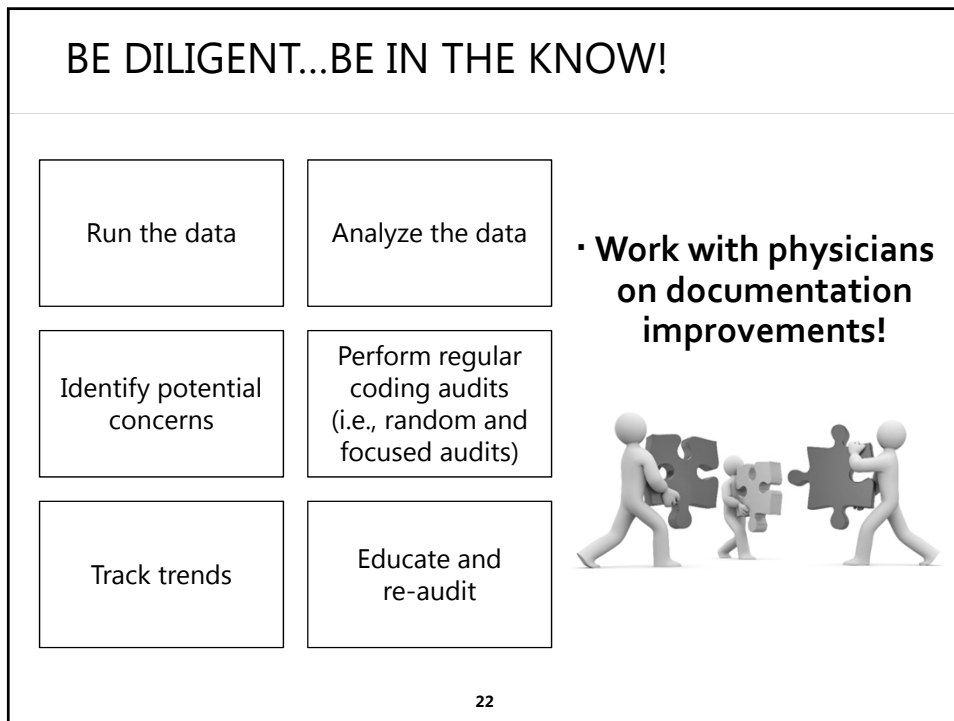
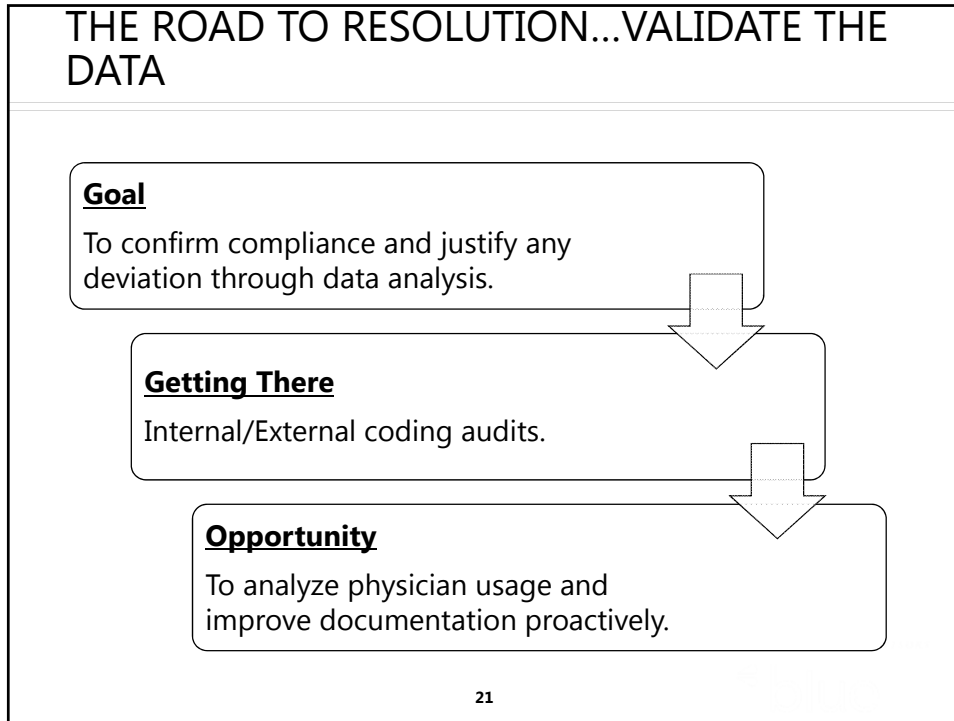
- Deviations in utilization may be based on various factors:



**BUT**

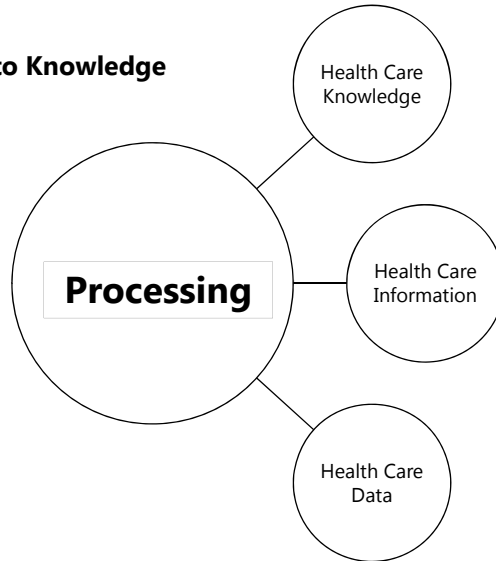
High usage can also mean improper coding, inflated documentation, and false claims.

20



## IT'S BETTER TO KNOW...KNOWLEDGE IS POWER

### From Data to Knowledge



23

## THINGS TO REMEMBER...



- With the EHR, we need to review template settings to align the volume of documentation with the nature of the presenting problem to improve coding accuracy and realign the provider's usage with benchmarks.
- Documentation and coding reviews by third-party payers is a reality in the current health care system.
- Medicare and other payers track where your providers fall in the spectrum of service use.
- Knowing your provider's utilization, understanding the related level of risk, and identifying problem areas in their coding is your best strategy to minimize the impact of external audits.

24

## QUESTIONS



## DATA MATTERS ARE YOU A TARGET FOR AN E/M AUDIT?

*thank you*

- If you have any questions, please feel free to contact me at:
  - Angie Babb, CPC
  - 317.275.7425
  - [ababb@blueandco.com](mailto:ababb@blueandco.com)